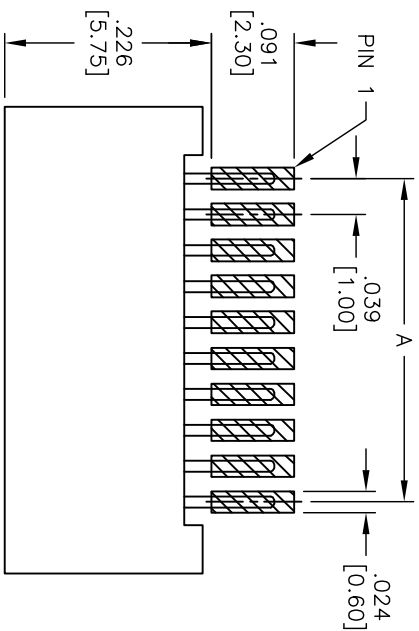
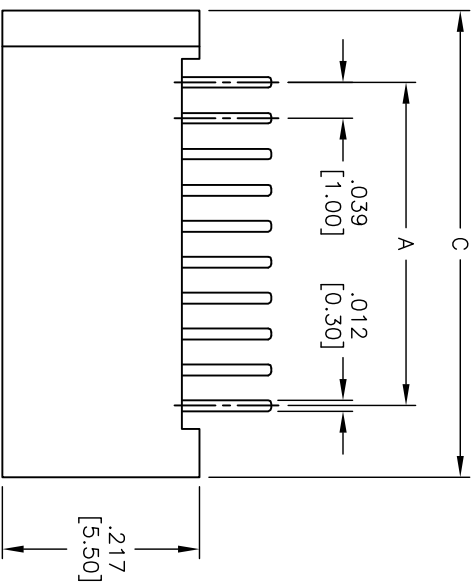
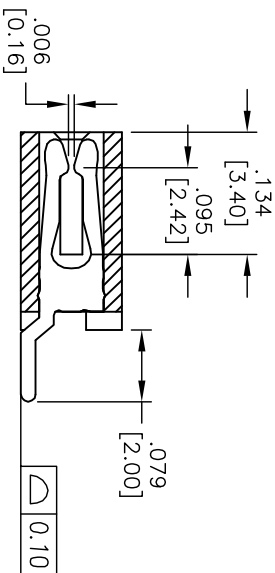
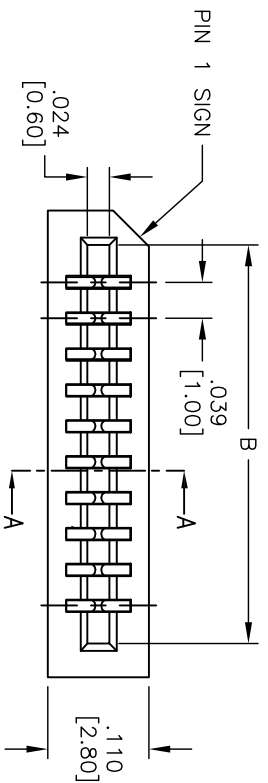
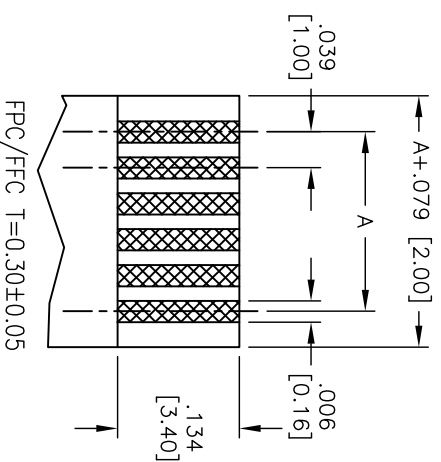


APPROVED: \_\_\_\_\_  
 DATE: \_\_\_\_\_ TITLE: \_\_\_\_\_

Rev	AWO #	Description	Date	Appr
-		RELEASED	3/23/05	
A		REDRAWN	8/15/14	HR/SL



RECOMMEND PCB LAYOUT



**SPECIFICATIONS:**  
 Material:  
 Insulator: Hi-Temp, thermoplastic, rated UL 94V-0  
 Insulator color: Black  
 Contacts: Phosphor Bronze  
 Plating:  
 Tin over Copper underplate overall  
 Electrical:  
 Operating voltage: 100 VAC max  
 Current rating: 0.5 Amps max  
 Contact resistance: 50 mohms max initial  
 Insulation resistance: 1000 Mohms min  
 Dielectric withstanding voltage: 500 VAC for 1 minute  
 Temperature Rating:  
 Operating temperature: -55°C to +85°C  
 Environmental:  
 Lead free, RoHS compliant

**Positions: 3 thru 36**  
 A = .039 [1.00] x No. of Spaces  
 B = A + .082 [2.10]  
 C = A + .157 [4.00]

**UNLESS OTHERWISE SPECIFIED**  
 ALL DIMENSIONS ARE IN INCHES [MM]  
 TOLERANCES: EXCEPT AS NOTED  
 INCHES HOLEES  
 .X ± .10 ØXX ± .10  
 .XX ± .020 ØXXX ± .015  
 .XXX ± .015 ØXXXX ± .010  
 APPROVALS: \_\_\_\_\_ DATE \_\_\_\_\_  
 DRAWN: SS 3/23/05  
 CHECKED: AY 7/28/10  
 APPROVED: \_\_\_\_\_

**ADAM TECH**  
 909 Railway Avenue, Union, NJ 07083  
 Phone: 908-687-5000 Fax: 908-687-5710  
 TITLE: LIF FLEX CIRCUIT CONNECTOR  
 SIDE ENTRY, SMT

Environmental:  
 Lead free, RoHS compliant



SIZE	PART NO.	REV.
X	PCB-C-XX-SA-SMT	A

REF: S00Q43T SCALE: NTS SHEET 1 OF 1